



ARGO X

L80 B10 > 72 000h | SDCM 3 | LLMF 85% | CRI 80

| PRODUCT NAME | POWER CONSUMPTION | LUMEN OUTPUT* | EFFICACY* | DIFFUSER | PRODUCT SIZE | ORDER REFERENCE |
|--------------|-------------------|---------------|-----------|----------|---------------|-----------------|
| ARGO X 40 | 43W | 4210 Lm | 98 lm/W | 375 Lm | Ø 440 x 80 mm | ARGX40 |
| ARGO X 45 | 43W | 4490 Lm | 104 lm/W | 375 Lm | Ø 520 x 80 mm | ARGX45 |
| ARGO X 50 | 47W | 4910 Lm | 104 lm/W | 375 Lm | Ø 630 x 80 mm | ARGX50 |
| ARGO X 70 | 70W | 7100 Lm | 101 lm/W | 375 Lm | Ø 800 x 80 mm | ARGX70 |

*Values are given for colour temperature of 4000K and may vary for other options

MATERIALS

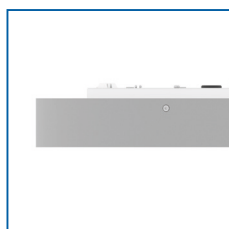
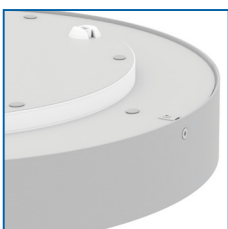
CASING - powder painted aluminium; standard colour - grey

BASE - steel sheet

DIFFUSER - opal

INSTALLATION

Surface mounted



ORDER CODE

COLOUR TEMPERATURE

3000K 3K

4000K 4K

DRIVER TYPE

Standard ST

Dimming - DALI DL

CASING COLOUR

Grey GR

White WH

Black BL

Custom RAL

Order code example: **ARGX40-4K-ST-WH**